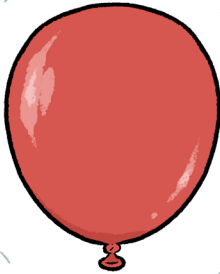


MAKE YOUR OWN LUNA PAPER DOLL

Help Luna improve her costume by equipping her with these different traits!



Gas vesicles help bacteria float in water.

cut here!



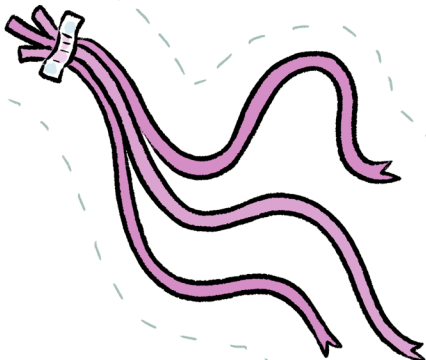
A **capsule or slime layer** can help bacteria stick to surfaces, escape being eaten, or keep moist.



Antibiotic resistance pumps prevent antibiotics from working, making bacteria resistant to treatment.



Type 6 secretion systems are weapons used by bacteria to kill one another.



Flagella allow bacteria to swim. Some bacteria use flagella to stick to surfaces.

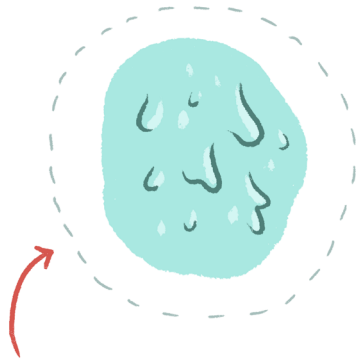


The **conjugative pilus** enables genes to be spread quickly between different bacterial species.



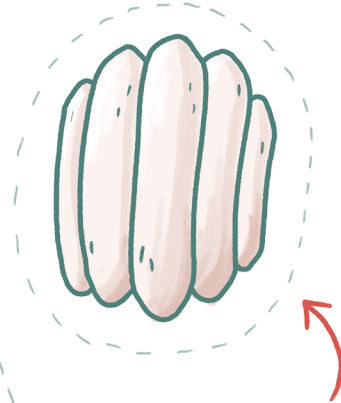
MAKE YOUR OWN BACTERIA PAPER DOLL

Help this bacteria by equipping it with these
different traits!



A **capsule or slime layer** can cover the surface of bacteria.

cut here!



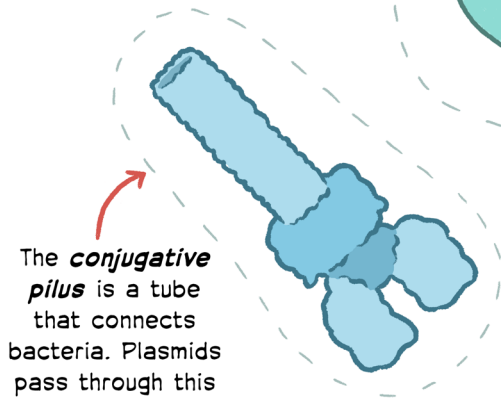
Gas vesicles are pods filled with air held inside bacteria.



Type 6 secretion systems are tiny molecular spears that inject toxins into victims.



Antibiotic resistance pumps push antibiotics out of bacteria.



The **conjugative pilus** is a tube that connects bacteria. Plasmids pass through this tube to infect other bacteria.

Flagella are long tails that propel bacteria forwards.

